

# Donating

TO FATHER GENE'S HELP CENTER

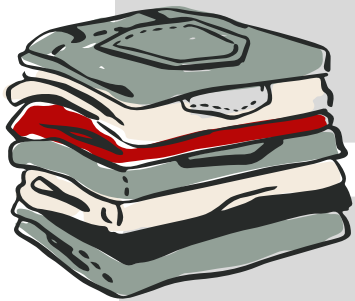
## DO'S AND DON'TS

### DO'S

Donate clothing.  
Things you can wear.



Clean & freshly washed,  
in usable condition.



Neatly folded in bags or boxes.  
Labeled on the outside. Bags tied shut, boxes closed.

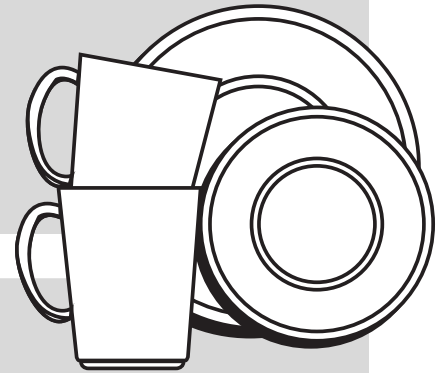


Be able to lift bags & boxes.



### DON'TS

Don't donate non-clothing items.



Don't donate clothing that is dirty, musty, or stained.



Don't donate loose items, garments on hangers or in receptacles you want back.



Don't overfill bags & boxes.  
If you can't lift it, neither can we.



[www.fathergeneshelp.org](http://www.fathergeneshelp.org)